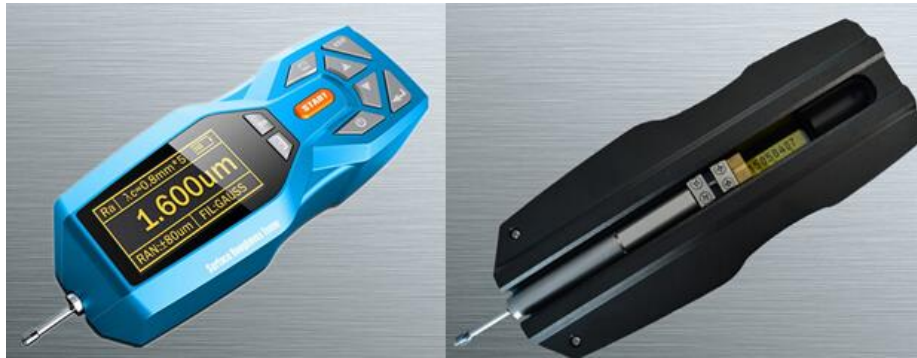


Advanced Surface Roughness Gauge



Functions and features:

- Electromechanical integration design, small volume, light weight, easy to use.
- Using DSP chip to control and data processing, high speed, low power consumption.
- Large range, parameters Ra, Rz, Rq, Rt, Rp, Rv, R3z, R3y, RzJIS, Rsk, Rku, Rsm, Rmr, Rx.
- 128 x 64 OLED dot matrix display, digital / graphic display, highlight no perspective.
- Compatible with ISO, DIN, ANSI, JIS national standards.
- Built-in lithium-ion rechargeable battery and a charging control circuit, high capacity, no memory effect.
- Working time more than 20 hours of continuous work.
- Large capacity data memory, can store 100 groups of original data and waveform.
- Real-time clock settings and display, convenient data recording and storage.
- With automatic dormancy, automatic shutdown and power saving function.
- Measurement information display and menu prompt information
- Full metal shell design, sturdy, compact, portable, high reliability.

The performance index of sensor:

The detection principle	:	Current induction
Measuring range	:	160 μm
Tip radius	:	5 μm
Tip material	:	Diamond
Stylus force	:	4mN (0.4gf)
Stylus angle	:	90°
The guide head vertical radius	:	45mm

Technical parameters :

The maximum driving trip	:	17.5mm
Indicating error	:	Not more than $\pm 10\%$
Variation of indication	:	Not more than 6%
The measured profile	:	Roughness, waviness, the original contour
Parameter	:	Ra (0.005 μm ~ 16 μm) ,Rz (0.02 μm ~ 160 μm) ,Rq, Rt, Rp, Rv, R3z, R3y, RzJIS, Rsk, Rku, Rsm, Rmr, Rx.
Filter	:	RC,PCRC,Gauss,ISO13565
The sampling length	:	L 0.25mm,0.8mm,2.5mm,8mm
Evaluation length	:	L (1-5)l
Internal storage capacity	:	100 groups of original data
External input / output interface	:	USB
Electric source	:	Built-in rechargeable lithium ion battery or external power adapter
Outline dimension	:	143 x 55 x 42mm (host).
Weight	:	about 0.4KG (host).

Standard supply:

Main body x1	Template support x 1
Standard sensor x1	Movable support x1
Reticle template x 1	USB charging cable x 1
Power adapter x1	Carry case x1