

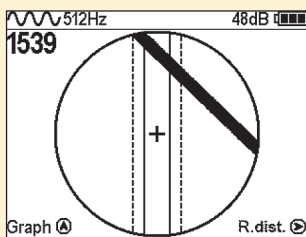
ARMORED OPTIC FIBER CABLE LOCATOR SUCCESS AG-309.15N

Application

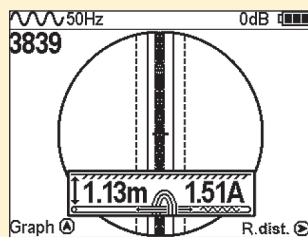
- Detection of armored OF cables on depth up to 10 meters
- Location of underground utilities at distance up to 3 kilometers
- Portable transmitter with 20W of power to locate almost any metal cable below ground surface
- Armored OF cable tracing with measurement of burial depth and current rate



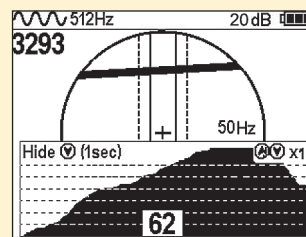
Features:



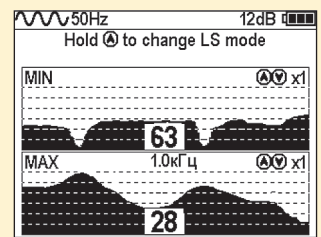
Indication of underground utility on the screen



Automatic depth and current rate measurement



Multiple modes for advanced applications (fault location, pin-pointing etc.)



| SPECIFICATIONS | |
|-----------------------------------|--|
| RECEIVER (AP-019.1) | |
| Maximum measured depth | 9,9 meters |
| Depth measurement accuracy | ±5% |
| Utility location accuracy | ±5% |
| Supported frequencies | 50(60)/ 100(120)/ 512/ 1024/ 8192 / 32768 Hz |
| Frequency range for "Radio" mode | 8 – 40 kHz |
| Max. gain factor | 120 dB |
| Dynamic range of the input signal | 100 dB |
| Sensitivity | mKA at 1m distance (at 33 kHz) |
| Display | LCD display, 320x240 pix., with LED backlight |
| Power supply | 4 type C batteries \ accumulators |
| Operation time | 20 hrs |
| Operating temperature | -20... +60°C |
| Storage temperature | -30... +60°C |
| IP protection rate | IP54 |
| Dimensions | 330x140x700 mm |
| Weight | 2,4 kg |
| TRANSMITTER (AG-105) | |
| Output power | 20W |
| Maximum output current | 5 A |
| Maximum output voltage | 40 V |
| Supported frequencies | 512/ 1024/ 8192 / 32768 Hz |
| Utility connection options | Direct, Clamp, Inductive |
| Power supply | 8 type C batteries (accumulators) \ 12V vehicle accumulator \ 220V |
| Operating time | 10 hrs |
| Visual indication | 2-digit LED segment indicator |
| Operating temperature | - 30 ... +60°C |
| IP protection rate | IP65 |
| Dimensions | 216x180x105mm |
| Weight | 2 |
| Warranty | 1 year |



| BASIC SET |
|---|
| Locator |
| Signal transmitter |
| Connection leads, Grounding accessories |
| 12 pcs type C batteries |
| User manual in English |
| Carrying bags |
| 12V vehicle accumulator power cable |
| OPTIONAL ACCESSORIES |
| A-frame sensor |
| Inductive clamp 50-125 mm |
| 12 pcs Type C Accumulators with charger |